



The future starts here

PLASPLY

All Round Edge Protected

PATENT PENDING

APPLICATION IN USE
CONCRETE SHUTTERING

Year 2011

INTRODUCING PlasPly with Edge Protection

PlasPly consists of a plywood core with a proprietary non-stick thermoplastic overlay edge fused all round with a solid thermoplastic edging.

The plastic edging grips and protects the ply layers while creating a tight seal which prevents moisture and water from entering into the plywood core....no swelling, no ply delaminating, no chipping.....greatly enhancing the lifespan of the board.

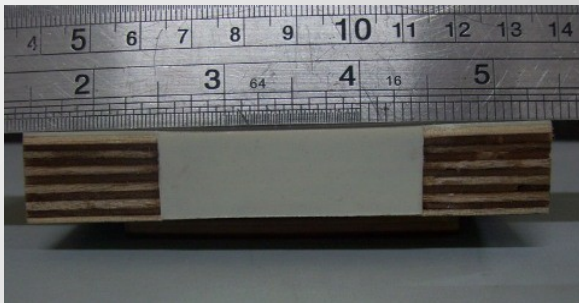
Stripping between panels will be much easier now as the 'rubbing' occurs between two smooth plastic edges.

This combination of thermoplastic plastic surface with wood core increases the lifespan and enhances the user experience in concrete shuttering and reduces the overall costs of ownership.

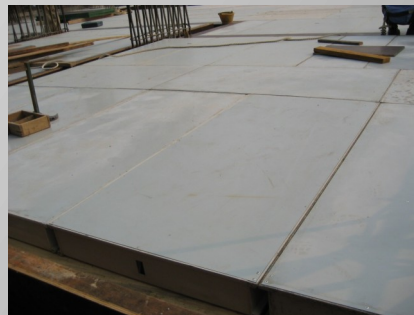
No Chipping!

No Swelling!

No Delamination!



Swelling does not occur along edging
*after 48hours 65°C water immersion



Use in panels systems








Consistent & smooth finishing

Features

- Non-Stick & repairable thermoplastic surface
- Impact & high abrasion resistance which resists hard knocks from use
- Board debonds from concrete easily - ease of stripping - little or no formoil required
- Easy maintenance with high pressure cleaning jet
- Lifespan greatly enhanced with surface or plywood repair with plastic putty
- Different models to suit various re-use requirements

Surface Renewal Guide

Steps as follows:

				
Clean Damaged Area.	Pre-Heat damaged area and inject hot plastic over the damaged area.	Leave to cool for 3-5 seconds.	Scrap off excess with a metal scrapper very quickly using a fast moving action.	Surface is repaired with immaculate results.

Models

- PlasPly *plus*** - Double sided plastic overlay, all round plastic edge sealed. High strength & abrasion resistance. High reuse >80.
- PlasPly *xtra*** - Double sided plastic overlay, all round plastic edge sealed. High abrasion resistance. High reuses >50.
- PlasPly *lite*** - Double sided plastic overlay, all round plastic edge sealed. Good abrasion resistance. High reuses >30.

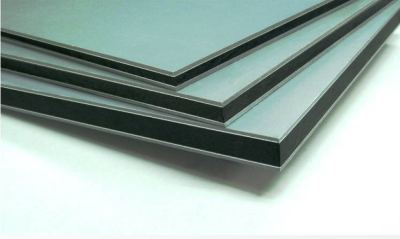
*reuse factor depends on end use and handling conditions

Specifications

Product	PlasPly <i>plus</i>	PlasPly <i>xtra</i>	PlasPly <i>lite</i>
Core Material Base	Tropical Hardwood, WBP Bonded		
Facing, front	1.1mm thk H85 thermoplastic	0.7mm thk H85 thermoplastic	0.7mm thk H60 thermoplastic
Facing, back	0.7mm thk H60 thermoplastic		
Surface Finishing	Smooth, matt		
Repairable	Yes	Yes	Yes
Edge Protection	4 sides 1.0mm thk		
Density, Kg/m ³	600 - 700		
Parallel to Grain,			
Bending Modulus, Mpa	5500-6500	5800-6800	
Bending Strength, Ultimate, Mpa	45-60	48-63	
Perpendicular to Grain			
Bending Modulus, Mpa	4000-5500	4300-5800	
Bending Strength, Ultimate, Mpa	32-53	35-55	
Operating Temperature, °C	-20 to +70		
Moisture	12%	12%	

Max Length = 3600mm, Max Width = 1500mm
Thickness = 9 to 30mm

COMPANIONS



TuffPly

All-plastic metal reinforced board



TuffDeck

All-plastic metal reinforced board with anti-slip surface



PlasDeck

Thermoplastic overlay plywood with anti-slip surface, edge fused with solid plastic edging

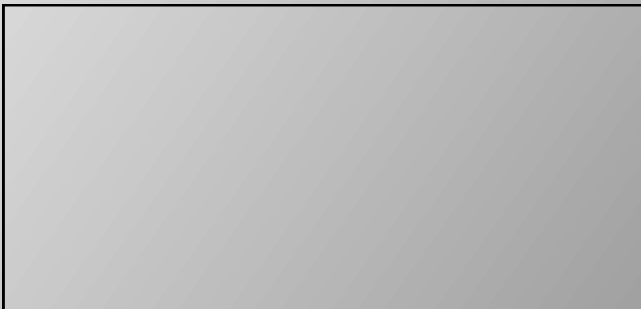
APPLICATIONS



About Us

Uber Engineering is a Singapore manufacturer of plastic composite boards. At Uber, we design, develop and manufacture plastic composite boards with the aim to replace conventional materials through value-added product innovation.

Authorised Distributor



Uber Engineering Pte Ltd
15 Neythal Road
Singapore 628580
Tel : +65-6265-7930
Fax : +65-6515-0084
email : info@uber-eng.com.sg
web : www.uber-eng.com.sg