

New Generation Plastic Composite Boards for Truck Panels

Plastic composite board which is ideal for

Trailer Panels



Container Panels

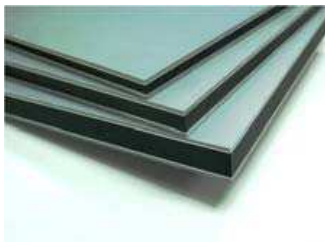


Truck Panels



Key Features

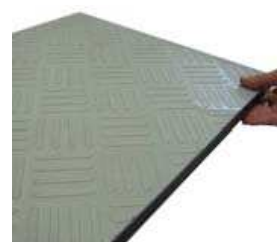
- ⇒ Comparable strength and weight to timber panels
- ⇒ Mechanically stable and robust, choice of all plastic version or a wood core base, for light to heavy loads, for dry or wet conditions
- ⇒ No rotting or termites problems
- ⇒ Low maintenance costs and long lifespan results in cost savings and sustainable solutions.
- ⇒ Panels can be easily joint using glue to form larger sheets
- ⇒ Damaged parts are easily replaced or repaired
- ⇒ Different surface colours or textures are available on request



TuffPly



TuffPlank



TuffDeck

Visit us at www.uber-eng.com.sg

Please contact us at info@uber-eng.com.sg for your enquiries